

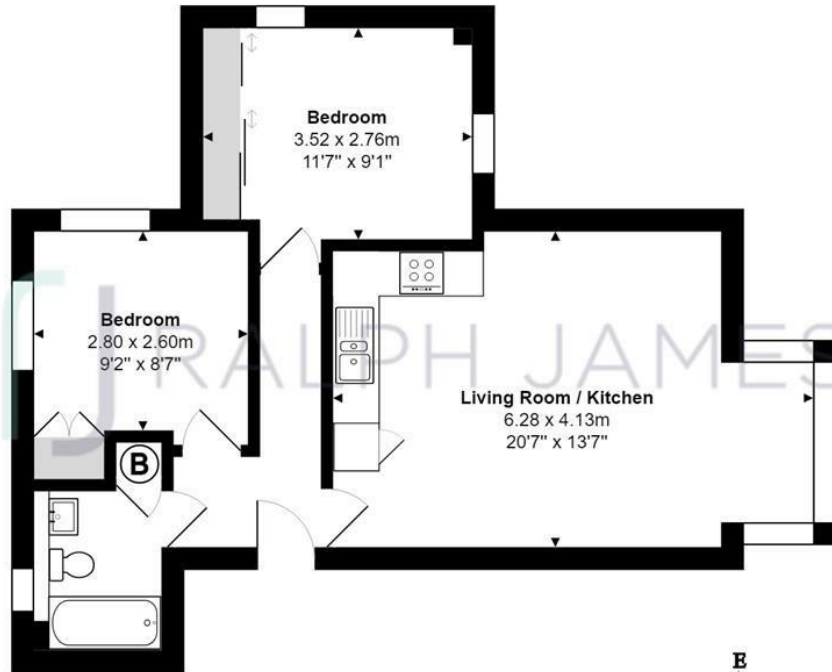
# Doran Drive Redhill Surrey

£300,000



RALPH JAMES

# FLOOR PLANS



## Ground Floor Flat

East Court, Doran Drive, Redhill

Total Area: 51.3 m<sup>2</sup> ... 552 ft<sup>2</sup>

FOR ILLUSTRATIVE PURPOSES ONLY.

Whilst every attempt has been made to ensure the accuracy of the floor plan shown, all measurements, positioning, fixtures, features, fittings and any other data shown are an approximate interpretation for illustrative purposes only and are not to scale.

No responsibility is taken for any error, omission, miss-statement or use of data shown.

The above statement applies to both 'Still Moving London LTD' and the Company or individual displaying this floor plan.

Unauthorised reproduction prohibited.

© Still Moving London LTD (www.stillmoving.london)

RALPH JAMES



## IN A NUTSHELL



Communal gardens



Open plan living space



Modern chic kitchen



Two bedrooms



Family bathroom



Allocated parking





# WHAT'S GREAT?

GUIDE PRICE: £300,000 - £325,000

Nestled between Redhill and Reigate, this two bedroom ground floor apartment is ideal for any busy professionals, investors or first-time buyers. The open plan layout is ideal for entertaining guests and the light décor along with large windows and high ceilings opens up the rooms to feel airy and spacious.

Redecorated throughout, you can move straight in with ease and make it your own. The open plan living/dining room and kitchen allows you to stay involved in the conversation whilst you're busy cooking up something delicious. The white soft close fitted kitchen is stylish and modern, with a beautiful wooden rustic worktop and metro wall tiles for the splashback, this is a great place for any budding chef to get creative. The bay window gives you that extra bit of space and is perfect for a dining table and chair set, where you can enjoy your meals.

The family bathroom follows the modern theme, it's light tile finish make the bathroom feel even more spacious. The large bathtub is great for enjoying a bubble bath after a long hard day, there's plenty of room for some additional storage and the illuminated bathroom mirror adds a touch of glam to boost you when getting ready for another busy day.

Both bedrooms have built in wardrobes so you can really utilise the space each room has to offer, the second bedroom would make a great guest room/nursery or even a lovely spacious study.

Redhill town centre is just a short walk away, with a newly refurbished Sainsbury's and a brand-new regeneration happening, to include further retail, eateries and entertainment. Direct access onto the M25 is just up Reigate Hill, and Redhill station have quick links to London, Gatwick and Brighton.



Thomas likes it  
because....

"This is such a well presented flat, great for first time buyers. There's plenty of space to have family and friends over, and the currently owners have really looked after it well."

## SELLER'S SECRET

"Doran drive is a quiet private road with a friendly community feel. It's been perfect for a short walk into Redhill for the daily commute into London, but also within walking distance of Reigate for the pubs, restaurants and Priory Park. This has been the perfect flat for our first home and we've loved hosting family and friends in our open plan living space or in the communal garden in the summer. We've done very little renovation work during our time here, but the flat still retains its fresh new build feel."

## CLOSE TO HOME

Redhill Station 1.0m

Reigate High Street 1.2m

Reigate Station 1.1m

Reigate College 1.0m

Wray Common Primary School 0.9m

Gatwick Airport 7.0m

East Surrey Hospital 1.9m

Donyings 0.5m

Share of Freehold

Service: £125PCM

To buy or not to buy...

RALPH JAMES



39 High Street | Redhill | RH1 1RX | 01737 765555  
admin@ralphjames.co.uk | www.ralphjames.co.uk

